



proofSIGN

...verifies your proofs





proofSIGN

fast and easy proof verification

How can you be sure your proofs are colour accurate and meet your standards?

proofSIGN measures and evaluate your proofs quickly and easily.

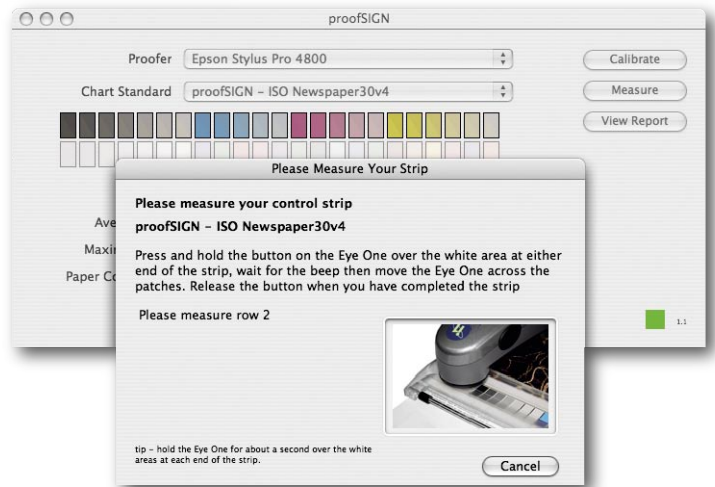
You can set your own CMYK target or use any of the included ISO standard targets; coated, uncoated, web and newspapers.

Simply print out a 46 patch target with your job, measure it with the GretagMacbeth Eye-One spectrophotometer and see your results on screen.

proofSIGN prints a label to attach to your proof and provides a detailed pdf report for your records.

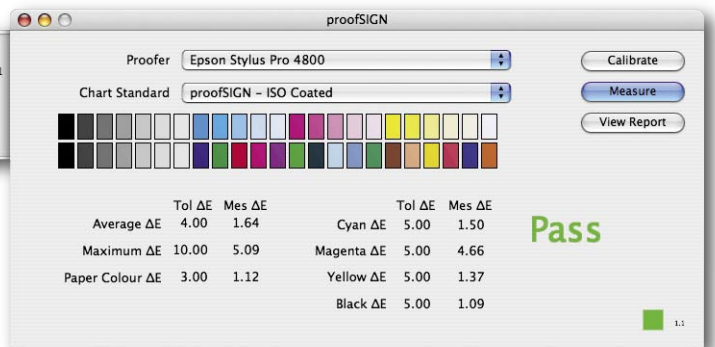
The proofSIGN label shows the ISO target values, the pass criteria and the delta E variation from the target for the primaries and a summary of the secondary colours. The pdf report gives you the full results for every colour on the control strip. You can adjust the tolerances to suit your needs.

If your proofs fail then proofSIGN offers you suggestions on how to resolve the problem.



Measure the control strip

Patch	81	77	63	81
CMYK	81	77	63	81
Target Lab	16.75	-0.22	-1.05	
Measured Lab	17.10	-1.45	-0.16	
ΔEab	1.56			



proofSIGN can verify your proofs to any ICC CMYK reference profile using either the FOGRA media wedge or the included proofSIGN chart.

proofSIGN includes references for:

- ISO Coated ISO 12647-2 paper types 1/2
- ISO Uncoated ISO 12647-2 paper type 4
- ISO Webcoated ISO 12647-2 paper type 3
- ISO Newspaper. ISO 12647-3

System Requirements:

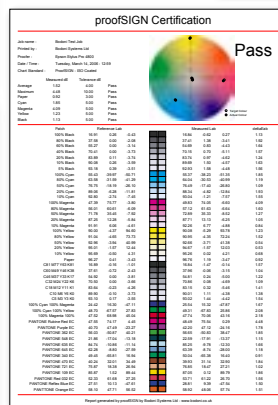
- Mac:**
 Mac OS 10.3 or later
 64MB RAM
 2 USB Ports (one for Eye One, one for label printer)
 Colour Monitor
 GretagMacbeth Eye One

- PC:**
 Windows 2000 or XP
 64MB RAM
 2 USB Ports (one for Eye One, one for label printer)
 Colour Monitor
 GretagMacbeth Eye One

	Tol ΔE	Mes ΔE
Cyan	5.00	1.50
Magenta	5.00	4.66
Yellow	5.00	1.37
Black	5.00	1.09
Paper	3.00	1.12
Average	4.00	1.64
Maximum	10.00	5.09

Pass

Job : 2PageLeaflet - 112792
 Epson Stylus Pro 4800
 proofSIGN - ISO Coated
 Bodoni Systems Ltd
 Wednesday, March 22, 2006 - 10:02 proofSIGN by Bodoni Systems Ltd



Save a comprehensive PDF report and print a label to attach to the proof

tel: + 44 (0)1895 825776
 www.bodoni.co.uk
 info@bodoni.co.uk



[Download FREE 30 day trial](#)